



National Collaborating Centre
for Determinants of Health

Centre de collaboration nationale
des déterminants de la santé

Healthy Child Development: Building on the Evidence and Taking Action

NCCDH Workshop
Chateau Mont-Sainte-Anne
July 8, 2009

Goal of this Workshop

- Explore the utility of TEAM-ECD as a conceptual framework to guide:
 - public health practice,
 - program and policy development
 - identification of gaps in research evidence

Knowledge to Action



National Collaborating Centre
for Determinants of Health

Centre de collaboration nationale
des déterminants de la santé

Objectives

- Provide an overview of the *Total Environment Assessment Model of Early Child Development* (TEAM-ECD)
- Review the evidence that informed its development
- Explore use of *TEAM-ECD* to guide practice, program and policy development
- Provide a venue for dialogue re use of TEAM-ECD



National Collaborating Centre
for Determinants of Health

Centre de collaboration nationale
des déterminants de la santé

Knowledge to Action

Outline

- Taking Action on the Determinants Hope Beanlands
- The Total Environment Assessment Model - Early Child Development (TEAM – ECD) Dr. Ziba Vaghri
- Group work – Applying TEAM-ECD Dr Anna Macleod
- Small Group Discussion - using TEAM ECD All Participants
- Plenary reporting and response Claire Betker
- Next steps and wrap up Hope Beanlands



National Collaborating Centre
for Determinants of Health

Centre de collaboration nationale
des déterminants de la santé

Knowledge to Action



National Collaborating Centre
for Determinants of Health

Centre de collaboration nationale
des déterminants de la santé

Taking Action on the Determinants of Health: Early Child Development

Hope Beanlands RN, PhD(c)
Scientific Director, National Collaborating
Centre for Determinants of Health

Knowledge to Action

National Collaborating Centre for Determinants of Health

Focus: The social and economic factors that influence the health of Canadians

Mission:

Engage public health practitioners, policy-makers and researchers to better include knowledge about the social determinants of health in policy and public health practice decisions that will contribute to social justice and health for all



National Collaborating Centre
for Determinants of Health

Centre de collaboration nationale
des déterminants de la santé

Knowledge to Action

Knowledge Translation (KT)

“.... The exchange, synthesis, and ethically sound application of research findings within a complex system of relationships among researchers and knowledge users; the incorporation of research knowledge into policies and practice, thus translating knowledge into improved health of the population” (Kiefer et al., 2005).

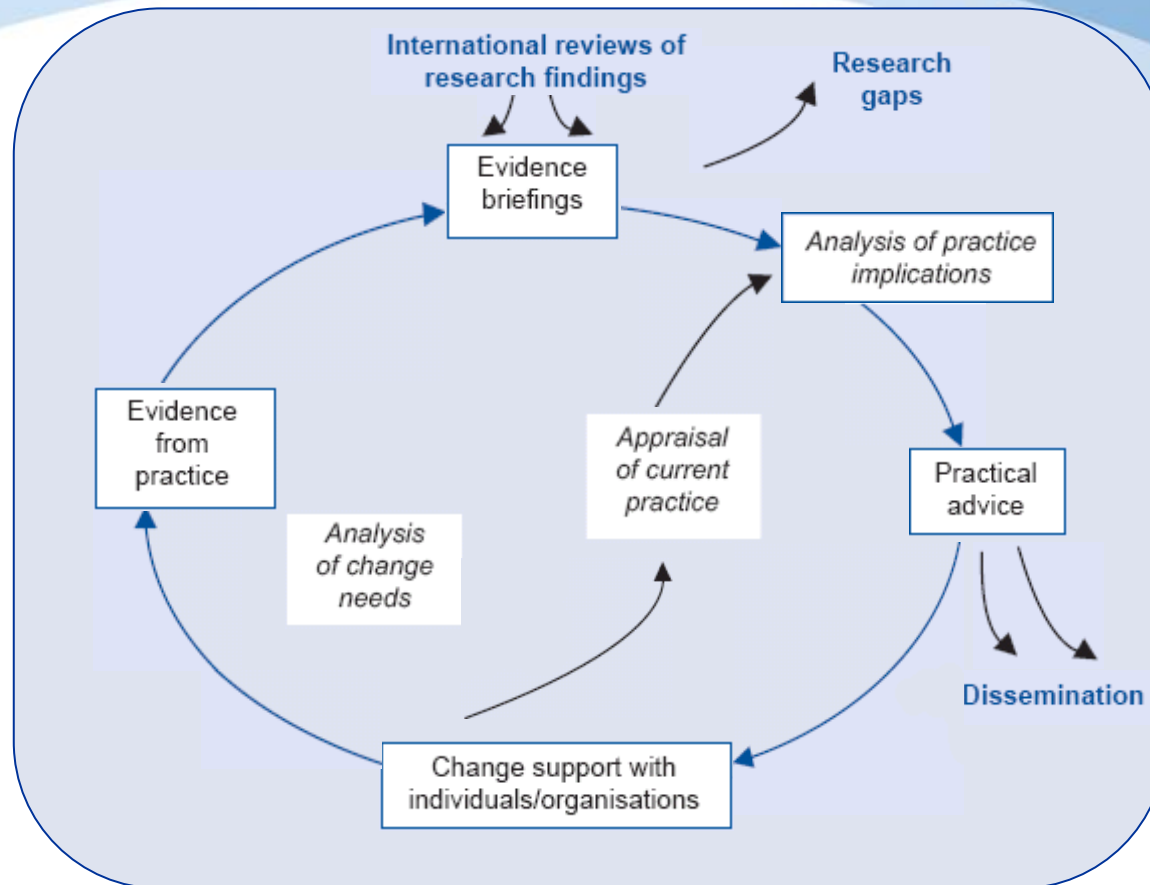


National Collaborating Centre
for Determinants of Health

Centre de collaboration nationale
des déterminants de la santé

Knowledge to Action

Evidence into Practice Cycle

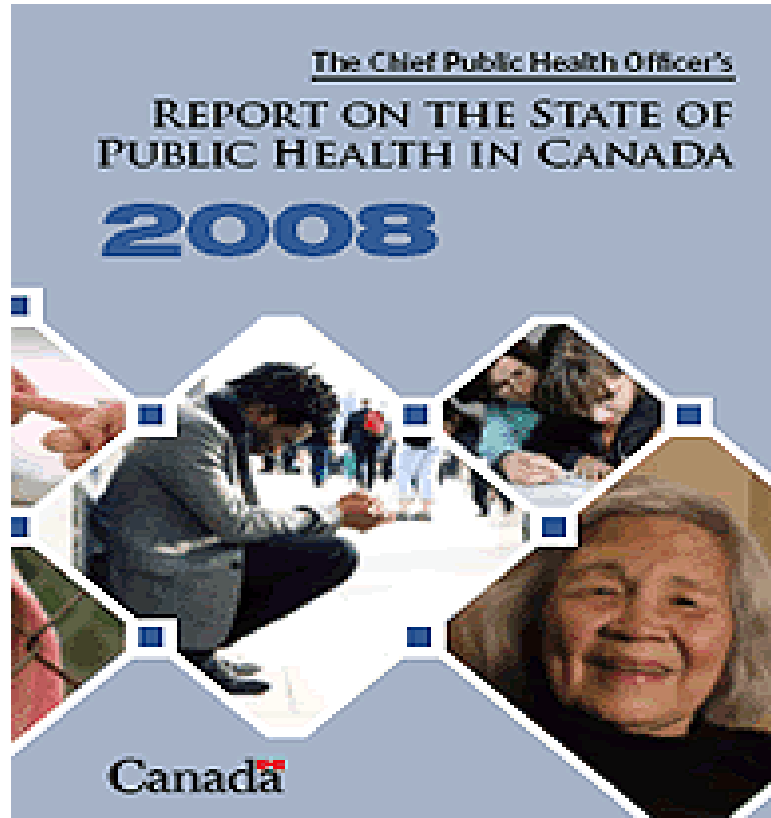


National Collaborating Centre
for Determinants of Health

Centre de collaboration nationale
des déterminants de la santé

Source: Kelly, Michael P; Viv Speller, Jane Meyrick
Getting Evidence into Practice in Public Health. National Health
Service Health Development Agency, 2004.

The Chief Public Health Officer's Report on The State of Public Health in Canada 2008



National Collaborating Centre
for Determinants of Health

Centre de collaboration nationale
des déterminants de la santé

Knowledge to Action

The Chief Public Health Officer's Report on The State of Public Health in Canada 2008

“The earliest years are pivotal to a child’s growth and development. Nurturing caregivers, positive learning environments, good nutrition and social interaction with other children all contribute to early physical and social development in ways that can positively affect health and well-being over a lifetime” p. 8



National Collaborating Centre
for Determinants of Health

Centre de collaboration nationale
des déterminants de la santé

Knowledge to Action

The Chief Public Health Officer's Report on The State of Public Health in Canada 2008

Critical areas:

- **adequate income** – family income should not be a barrier to positive childhood development, and support mechanisms should be in place for all children to have a good start in life;
- **effective parenting and family functioning**– effective parenting skills are fundamental to child development, however, parents may also require employer support for flexible work hours and maternity/parental leaves, as well as broader social support for family based opportunities and resources; and
- **supportive community environments** – all members of the community have a responsibility for the healthy development of children. Communities need to provide accessible health and social programs and resources for families with children.



National Collaborating Centre
for Determinants of Health

Centre de collaboration nationale
des déterminants de la santé

Knowledge to Action

How Do We, in Public Health, Use Our Knowledge of the Social Determinants?

We know, based on 2004 & 2005 Statistics

- Almost 8% or 684,000 Canadian families were poor
- Almost 12% or 788,000 Canadian children were living in poverty
- Just under ½ of all poor children live in lone-parent families,
- Investment of \$9,400 to bring them up to the poverty line



National Collaborating Centre
for Determinants of Health

Centre de collaboration nationale
des déterminants de la santé

Knowledge to Action

Social Environment:

We also know, based on 2004 & 2005 Statistics

- 49% of recent immigrant families live in poverty
- 40% of off-reserve First Nations children live in poverty
- 34% of children in visible minority families are poor
- Child poverty consistently fallen in Quebec for the past 10 years

»

Knowledge to Action



National Collaborating Centre
for Determinants of Health

Centre de collaboration nationale
des déterminants de la santé

Healthy Child Development:

We know:

The effect of prenatal and early childhood experiences on subsequent health, well-being, coping skills and competence is very powerful.

Children born in low-income families are more likely than those born to high-income families to have low birth weights, to eat less nutritious food, and to have more difficulty in school.



National Collaborating Centre
for Determinants of Health

Centre de collaboration nationale
des déterminants de la santé

Knowledge to Action

How does poverty impact child health?

- Poor physical health (combination measure)
- High infant mortality - 6.5 per 1,000 dying in the first year of life in the poorest fifth of Canadian urban neighbourhoods compared to 3.9 per 1,000 in the richest fifth
- Possibility of more children with anti-social behaviour, conduct problems, hyperactivity and inattention & other behavioural challenges



National Collaborating Centre
for Determinants of Health

Centre de collaboration nationale
des déterminants de la santé

How does poverty impact child health?

- Low birth weight:
 - Higher rates of mortality & illness
 - Lower rates of growth
 - More developmental challenges
 - More health related limitations in life
- Obesity:
 - 25% among low-income compared to 16% within higher-income families



National Collaborating Centre
for Determinants of Health

Centre de collaboration nationale
des déterminants de la santé

How does poverty impact child health?

- School and cognitive difficulties, with low-SES children:
 - Less prepared for learning when they begin school
 - Poorer educational outcomes
 - Higher drop-out rates



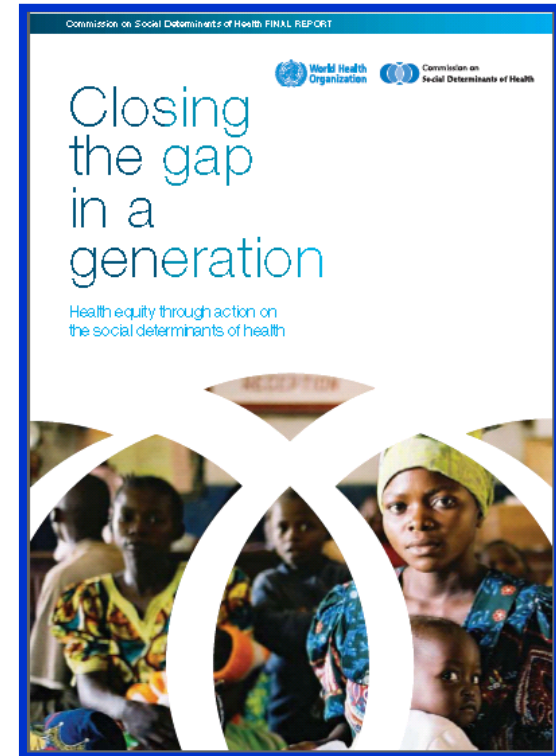
National Collaborating Centre
for Determinants of Health

Centre de collaboration nationale
des déterminants de la santé

Global Concern: World Health Organization Commission Social Determinants of Health

Achieving
Health Equity:
from root
causes to fair
outcomes

COMMISSION ON SOCIAL DETERMINANTS OF HEALTH
INTERIM STATEMENT

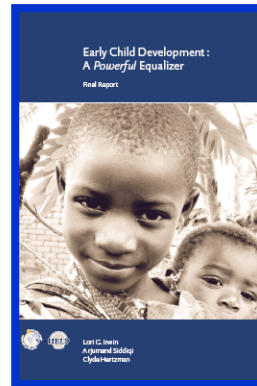
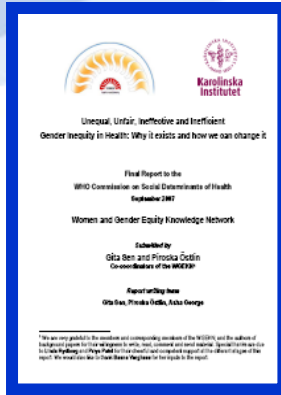


National Collaborating Centre
for Determinants of Health

Centre de collaboration nationale
des déterminants de la santé

Knowledge to Action

WHO Commission: Knowledge Networks



- Women and gender equity
- Early child development
- Employment conditions and health inequalities

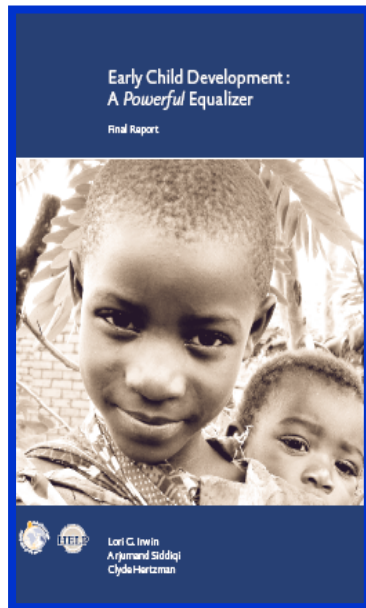


National Collaborating Centre
for Determinants of Health

Centre de collaboration nationale
des déterminants de la santé

Knowledge to Action

Early Child Development: A Powerful Equalizer



Irwin, Siddiqi & Hertzman, 2007

- ECD strongly influences basic learning, school success, economic participation, social citizenry and health
- Developmental approach
- Knowledge synthesis about opportunities to improve ECD
- Framework for understanding the environments that influence early development

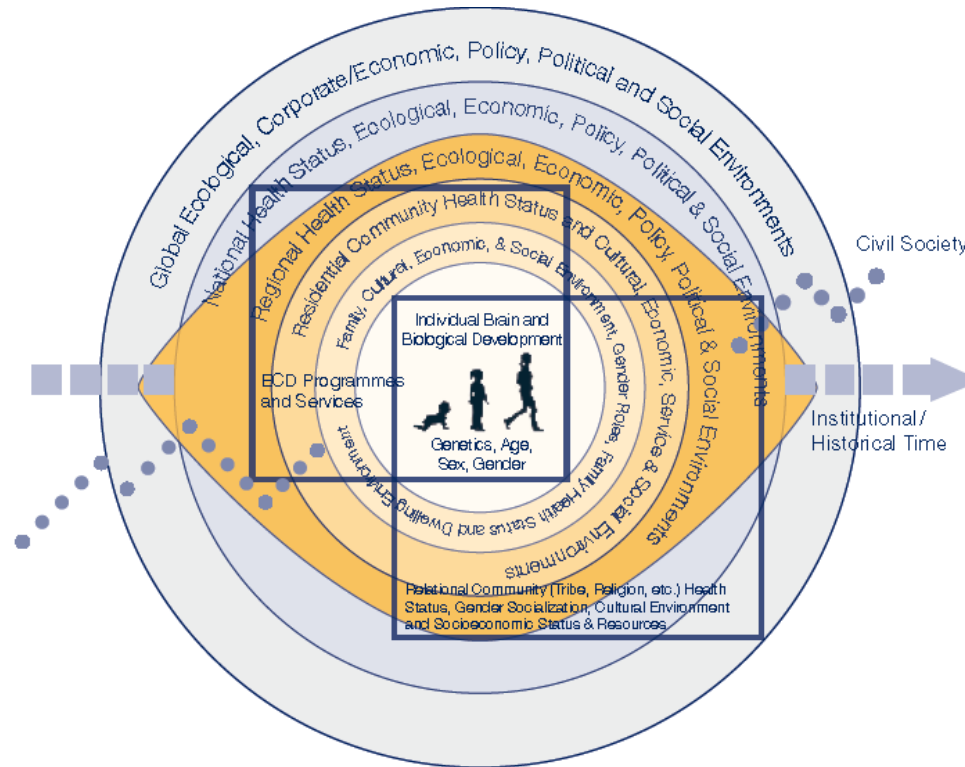


National Collaborating Centre
for Determinants of Health

Centre de collaboration nationale
des déterminants de la santé

Knowledge to Action

Total Environmental Assessment Model for Early Child Development



National Collaborating Centre
for Determinants of Health

Centre de collaboration nationale
des déterminants de la santé

Source: WHO Commission on Social Determinants of Health. (2007). Early Child Development: A Powerful Equalizer. WHO: Switzerland.



National Collaborating Centre
for Determinants of Health

Centre de collaboration nationale
des déterminants de la santé

Healthy Child Development: Building on the Evidence and Taking Action

NCCDH Workshop
Chateau Mont-Sainte-Anne
July 8, 2009